

46.0"	OM46N	46.0"	OM46N-D
55.0"	OM55N	55.0"	OM55N-D



## One-sided brilliance or two? It's your choice.

### OMN / OMN-D Series Single and Dual Signage Displays

The Samsung OMN/OMN-D series was designed to do one thing: engage customers. Exceptionally bright and colorful, sidewalk traffic can't walk by without noticing your messages. The OMN single display features 4000 nits brightness, for impact on the brightest days. Its sleek, slim design will look beautiful hanging in your windows. The OMN-D series features a double-sided display. The window-facing side's 3000-nit brightness helps maintain picture integrity regardless of sunlight, while the in-store side features 1000 nits to deliver information clearly. And you can install one OMN-D series display instead of two typical displays, saving you space and installation costs while increasing your appeal, inside and out.



OMN series single-sided display operates in both portrait and landscape. OMN-D series dual-sided display operates in portrait mode only.

### Key Features



#### Brilliant, Glare-Free Picture Quality, One Side or Two

The OMN/OMN-D series displays deliver messages that are bright and clear. They deliver uncompromising picture quality that will capture the attention of potential customers, even in direct sunlight. The single-sided OMN series features 4,000-nit brightness, while the dual-sided OMN-D series features 3,000-nit brightness on the exterior-facing panel and 1000 nits on the interior-facing panel.



#### Slim Design Fits Seamlessly into Any Display Window

The OMN and OMN-D series displays feature a remarkably slim design that can be easily mounted either on a stand or hung from a ceiling, giving retailers more placement options. The smart design offers flexibility in how valuable space on the floor is designed and utilized, while integrating cleanly into any store's design style.



#### All-in-One Signage Solution

Each display features its own MagicInfo Player S6, backed by the powerful Tizen operating system. It allows for easy content management and ensures seamless content transition and playback. All without the need for an external signage player or PC.



#### Samsung Circular Polarizing Technology

Samsung's circular polarizing technology allows content to be easily viewed even while wearing polarized sunglasses.



#### Durable 24/7 Performance and 3-Year Warranty

OMN/OMN-D series displays will deliver impactful messaging 24/7. They're IP5X-validated for dust protection and are engineered to prevent overheating. A 3-year onsite warranty adds peace of mind.



#### Clean and Clutter-Free

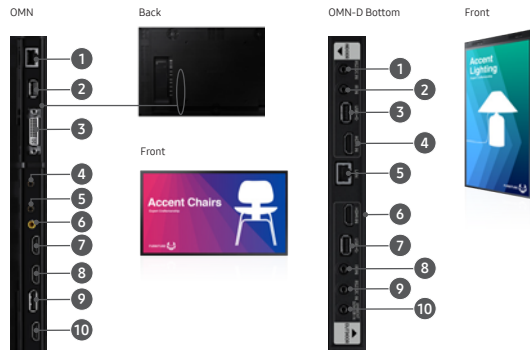
An integrated cable guide provides a clean, organized look, while embedded Wi-Fi allows content and firmware updates without the need for excessive cables.

# Samsung OMN/OMN-D Series In-Window Displays

			OM46N	OM55N	OM46N-D	OM55N-D
Panel	Diagonal Size	Class Measured	46"	55"	46"	55"
	Type		120Hz E-LED BLU	120Hz E-LED BLU	120Hz E-LED BLU	120Hz / 60Hz E-LED BLU
	Resolution		1920 x 1080 (16:9)	1920 x 1080 (16:9)	1920 x 1080 (16:9)	1920 x 1080 (16:9)
	Brightness (Typ.)		4,000 nits	4,000 nits	3,000 / 1,000 nits	3,000 / 1,000 nits
	Contrast Ratio (Typ.)		5,000:1	4,000:1	5,000:1	4,000:1
	Viewing Angle (H / V)		178 / 178	178 / 178	178 / 178	178 / 178
	Response Time (G-to-G)		6ms	6ms	6ms	6ms (3,000 nits), 8ms (1,000 nits)
	Display Colors		8 bit - 16.7M	8 bit - 16.7M	8 bit - 16.7M	8 bit - 16.7M
	Color Gamut		72%	72%	72%	72%
	Operation Hours		24/7	24/7	24/7	24/7
	Panel Orientation		Landscape / Portrait	Landscape / Portrait	Portrait	Portrait
	Special Certification		IP5X	IP5X	IP5X	IP5X
	Connectivity	Input	RGB	DisplayPort 1.2 (1)	DisplayPort 1.2 (1)	N/A
Video			HDMI 2.0 (2)	HDMI 2.0 (2)	HDMI 2.0 (2)	HDMI 2.0 (2)
HDCP			HDCP 2.2	HDCP 2.2	HDCP 2.2	HDCP 2.2
Output		USB	USB 2.0 (1)	USB 2.0 (1)	USB 2.0 (2)	USB 2.0 (2)
		RGB	HDMI 2.0	HDMI 2.0	N/A	N/A
		Video	Yes	Yes	N/A	N/A
External Control	Audio	Stereo Mini Jack	Stereo Mini Jack	N/A	N/A	
	External Sensor	RS232C (In / Out), RJ45 (In / Out)	RS232C (In / Out), RJ45 (In / Out)	RS232C (In), RJ45 (In)	RS232C (In), RJ45 (In)	
	Wi-Fi	Detachable Type (IR, Ambient)	Detachable Type (IR, Ambient)	Detachable Type (IR, Ambient (Outdoor Only))	Detachable Type (IR, Ambient (Outdoor Only))	
Power	Type	Internal	Internal	Internal	Internal	
	Power Supply	AC 100 - 240 V~ (+/- 10 %), 50 / 60 Hz	AC 100 - 240 V~ (+/- 10 %), 50 / 60 Hz	AC 100 - 240 V~ (+/- 10 %), 50 / 60 Hz	AC 100 - 240 V~ (+/- 10 %), 50 / 60 Hz	
	Power Consumption	Max	350 W	450 W	380 W	500 W
		Typical	330 W	420 W	380 W	470 W
Mechanical Specs	Dimensions	Set (W x H x D)	1062 x 616.6 x 54.5 mm / 41.8" x 24.28" x 2.15"	1253.4 x 724.2 x 54.5 mm / 49.35" x 28.51" x 2.15"	6191 x 11075 x 69.5 mm / 24.37" x 43.60" x 2.74"	726.8 x 1299 x 69.5 mm / 28.61" x 51.14" x 2.74"
		Package (W x H x D)	1189 x 757 x 158 mm / 46.81" x 29.8" x 6.22"	1420 x 879 x 178 mm / 55.9" x 34.61" x 7"	796 x 1255 x 327 mm / 31.34" x 49.41" x 12.87"	940 x 1466 x 367 mm / 37.0" x 57.72" x 14.45"
	Weight	Set	18.2 kg / 40.12 lbs	22.1 kg / 48.72 lbs	32 kg / 70.55 lbs	42 kg / 92.6 lbs
		Package	23 kg / 50.71 lbs	28 kg / 61.73 lbs	39.5 kg / 87.08 lbs	52 kg / 114.64 lbs
	VESA Mount (mm)		400 x 400 mm	400 x 400 mm	N/A	N/A
	Bezel Width (mm)		19.9 (even)	19.9 (even)	22.8 (even)	22.8 (even)
Environmental Conditions	Operating Temperature		0°C~ 30°C (Direct Sunlight) 0°C~ 40°C (w/o Direct Sunlight)	0°C~ 30°C (Direct Sunlight) 0°C~ 40°C (w/o Direct Sunlight)	0°C~ 30°C (Direct Sunlight) 0°C~ 40°C (w/o Direct Sunlight)	0°C~ 30°C (Direct Sunlight) 0°C~ 40°C (w/o Direct Sunlight)
	Operating Humidity		10~80%	10~80%	10~80%	10~80%
	Features		IP5X Rated, Polarized Sun Glasses Viewable in Any Direction, Portrait / Landscape Installation Support, Auto Brightness Control with Ambient Brightness Sensor, Temperature Sensor, RJ45 MDC, Auto Source Switching & Recovery, Clock Battery (80 Hrs Clock Keeping), Kensington Lock, Wi-Fi Module Embedded	IP5X Rated, Polarized Sun Glasses Viewable in Any Direction, Portrait / Landscape Installation Support, Auto Brightness Control with Ambient Brightness Sensor, Temperature Sensor, RJ45 MDC, Auto Source Switching & Recovery, Clock Battery (80 Hrs Clock Keeping), Kensington Lock, Wi-Fi Module Embedded	IP5X Rated, Polarized Sun Glasses Viewable in Any Direction, Portrait Installation Support, Auto Brightness Control with Ambient Brightness Sensor, Temperature Sensor, RJ45 MDC, Auto Source Switching & Recovery, Clock Battery (80 Hrs Clock Keeping), Wi-Fi Module Embedded (2 Ea, One Per Each Display)	IP5X Rated, Polarized Sun Glasses Viewable in Any Direction, Portrait Installation Support, Auto Brightness Control with Ambient Brightness Sensor, Temperature Sensor, RJ45 MDC, Auto Source Switching & Recovery, Clock Battery (80 Hrs Clock Keeping), Wi-Fi Module Embedded (2 Ea, One Per Each Display)
Internal Player (Embedded H/W)	Special		IP5X Rated, Polarized Sun Glasses Viewable in Any Direction, Portrait / Landscape Installation Support, Auto Brightness Control with Ambient Brightness Sensor, Temperature Sensor, RJ45 MDC, Auto Source Switching & Recovery, Clock Battery (80 Hrs Clock Keeping), Kensington Lock, Wi-Fi Module Embedded	IP5X Rated, Polarized Sun Glasses Viewable in Any Direction, Portrait / Landscape Installation Support, Auto Brightness Control with Ambient Brightness Sensor, Temperature Sensor, RJ45 MDC, Auto Source Switching & Recovery, Clock Battery (80 Hrs Clock Keeping), Kensington Lock, Wi-Fi Module Embedded	IP5X Rated, Polarized Sun Glasses Viewable in Any Direction, Portrait Installation Support, Auto Brightness Control with Ambient Brightness Sensor, Temperature Sensor, RJ45 MDC, Auto Source Switching & Recovery, Clock Battery (80 Hrs Clock Keeping), Wi-Fi Module Embedded (2 Ea, One Per Each Display)	IP5X Rated, Polarized Sun Glasses Viewable in Any Direction, Portrait Installation Support, Auto Brightness Control with Ambient Brightness Sensor, Temperature Sensor, RJ45 MDC, Auto Source Switching & Recovery, Clock Battery (80 Hrs Clock Keeping), Wi-Fi Module Embedded (2 Ea, One Per Each Display)
	Processor	Core	Coretex A72 1.7GHz Quad-Core CPU	Coretex A72 1.7GHz Quad-Core CPU	Coretex A72 1.7GHz Quad-Core CPU	Coretex A72 1.7GHz Quad-Core CPU
		Cache	L1 Instruction Cache: 48KB L1 Data Cache: 32KB L2 Cache: 2MB	L1 Instruction Cache: 48KB L1 Data Cache: 32KB L2 Cache: 2MB	L1 Instruction Cache: 48KB L1 Data Cache: 32KB L2 Cache: 2MB	L1 Instruction Cache: 48KB L1 Data Cache: 32KB L2 Cache: 2MB
	Main Memory	Speed	1.7GHz	1.7GHz	1.7GHz	1.7GHz
		Interface	2.5GB LPDDR4 1.5GHz 64 bit	2.5GB LPDDR4 1.5GHz 64 bit	2.5GB LPDDR4 1.5GHz 64 bit	2.5GB LPDDR4 1.5GHz 64 bit
	Graphics	Resolution	Graphic Resolution: 1920 x 1080 Output Resolution: 3840 x 2160 (Scale Up From Graphic Processing Result) - Supports OpenGL ES	Graphic Resolution: 1920 x 1080 Output Resolution: 3840 x 2160 (Scale Up From Graphic Processing Result) - Supports OpenGL ES	Graphic Resolution: 1920 x 1080 Output Resolution: 3840 x 2160 (Scale Up From Graphic Processing Result) - Supports OpenGL ES	Graphic Resolution: 1920 x 1080 Output Resolution: 3840 x 2160 (Scale Up From Graphic Processing Result) - Supports OpenGL ES
		Storage (FDM)	8GB (3.88GB Occupied by O/S, 4.12GB Available)	8GB (3.88GB Occupied by O/S, 4.12GB Available)	8GB (3.88GB Occupied by O/S, 4.12GB Available)	8GB (3.88GB Occupied by O/S, 4.12GB Available)
	Multimedia	Video Decoder	MPEG-1/2/4, H.263, H.264/AVC, UHD H.264/AVC, VC-1, AVS+, HEVC, JPEG, PNG, VP8, VP9	MPEG-1/2/4, H.263, H.264/AVC, UHD H.264/AVC, VC-1, AVS+, HEVC, JPEG, PNG, VP8, VP9	MPEG-1/2/4, H.263, H.264/AVC, UHD H.264/AVC, VC-1, AVS+, HEVC, JPEG, PNG, VP8, VP9	MPEG-1/2/4, H.263, H.264/AVC, UHD H.264/AVC, VC-1, AVS+, HEVC, JPEG, PNG, VP8, VP9
		Audio Decoder	AC3 (DD), MPEG	AC3 (DD), MPEG	AC3 (DD), MPEG	AC3 (DD), MPEG
	IO Ports	USB	USB 2.0	USB 2.0	USB 2.0	USB 2.0
Operating System		Tizen 4.0 (VDLinux)	Tizen 4.0 (VDLinux)	Tizen 4.0 (VDLinux)	Tizen 4.0 (VDLinux)	
Accessories	Included	Quick Setup Guide, Regulatory Guide, Warranty Card, Power Cord, Remote Controller, Batteries, IR, Ambient Sensor	Quick Setup Guide, Regulatory Guide, Warranty Card, Power Cord, Remote Controller, Batteries, IR, Ambient Sensor	Quick Setup Guide, Regulatory Guide, Warranty Card, Power Cord, Remote Controller, Batteries, IR, Ambient Sensor	Quick Setup Guide, Regulatory Guide, Warranty Card, Power Cord, Remote Controller, Batteries, IR, Ambient Sensor	
Certification	Safety	UL(USA): cUL60950-1	UL(USA): cUL60950-1	UL(USA): cUL60950-1	UL(USA): cUL60950-1	
	EMC	FCC (USA) Part 15, Subpart B Class A	FCC (USA) Part 15, Subpart B Class A	FCC (USA) Part 15, Subpart B Class A	FCC (USA) Part 15, Subpart B Class A	
Service	Standard Warranty	3 Years Onsite (Parts / Labor / Backlight)	3 Years Onsite (Parts / Labor / Backlight)	3 Years Onsite (Parts / Labor / Backlight)	3 Years Onsite (Parts / Labor / Backlight)	

## Connectivity

- RS232C Out / In
- Audio Out
- IR In
- Ambient Sensor In
- USB
- LAN Out
- LAN In
- HDMI 1 In
- HDMI 2 In
- DP In
- HDMI Out



## ProCare

### Samsung ProCare Indoor Display Solutions

- Fast Track with White Glove Next Business Day<sup>1</sup> Service
  - Includes tech-assisted exchange of display: Technician removes original unit, installs replacement and ships non-working unit to Samsung
- Fast Track Next Business Day Exchange
  - Return shipping label provided, customer returns original unit in new unit's box
- Available on sizes 32"-85"
- 3-5 year terms available

## Learn More

[samsung.com/business](https://samsung.com/business) [insights.samsung.com](https://insights.samsung.com) [samsung.com/b2bdigitalsignage](https://samsung.com/b2bdigitalsignage)

## Product Support

1-866-SAM4BIZ

## Follow Us

[youtube.com/samsungbizusa](https://youtube.com/samsungbizusa) [@SamsungBizUSA](https://twitter.com/SamsungBizUSA)

**SAMSUNG**