

46.0"	OM46N	46.0"	OM46N-D
55.0"	OM55N	55.0"	OM55N-D



One-sided brilliance or two? It's your choice.

OMN / OMN-D Series Single and Dual Signage Displays

The Samsung OMN/OMN-D series was designed to do one thing: engage customers. Exceptionally bright and colorful, sidewalk traffic can't walk by without noticing your messages. The OMN single display features 4000 nits brightness, for impact on the brightest days. Its sleek, slim design will look beautiful hanging in your windows. The OMN-D series features a double-sided display. The window-facing side's 3000-nit brightness helps maintain picture integrity regardless of sunlight, while the in-store side features 1000 nits to deliver information clearly. And you can install one OMN-D series display instead of two typical displays, saving you space and installation costs while increasing your appeal, inside and out.



OMN series single-sided display operates in both portrait and landscape.
OMN-D series dual-sided display operates in portrait mode only.

Key Features



Brilliant, Glare-Free Picture Quality, One Side or Two

The OMN/OMN-D series displays deliver messages that are bright and clear. They deliver uncompromising picture quality that will capture the attention of potential customers, even in direct sunlight. The single-sided OMN series features 4,000-nit brightness, while the dual-sided OMN-D series features 3,000-nit brightness on the exterior-facing panel and 1000 nits on the interior-facing panel.



Slim Design Fits Seamlessly into Any Display Window

The OMN and OMN-D series displays feature a remarkably slim design that can be easily mounted either on a stand or hung from a ceiling, giving retailers more placement options. The smart design offers flexibility in how valuable space on the floor is designed and utilized, while integrating cleanly into any store's design style.



All-in-One Signage Solution

Each display features its own MagicInfo Player S6, backed by the powerful Tizen operating system. It allows for easy content management and ensures seamless content transition and playback. All without the need for an external signage player or PC.



Samsung Circular Polarizing Technology

Samsung's circular polarizing technology allows content to be easily viewed even while wearing polarized sunglasses.



Durable 24/7 Performance and 3-Year Warranty

OMN/OMN-D series displays will deliver impactful messaging 24/7. They're IP5X-validated for dust protection and are engineered to prevent overheating. A 3-year onsite warranty adds peace of mind.



Clean and Clutter-Free

An integrated cable guide provides a clean, organized look, while embedded Wi-Fi allows content and firmware updates without the need for excessive cables.

Digital Display Store
<https://www.digitaldisplaystore.com/>
 855-958-0757
 Sales@DigitalDisplayStore.com

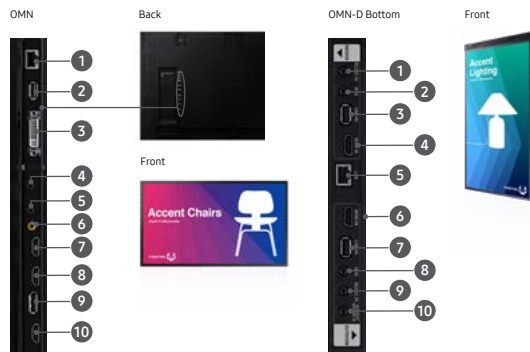
Contact Us: [samsung.com/b2bdigitalsignage](https://www.samsung.com/b2bdigitalsignage)

Samsung OMN/OMN-D Series In-Window Displays

			OM46N	OM55N	OM46N-D	OM55N-D	
Panel	Diagonal Size	Class Measured	46"	55"	46"	55"	
	Type		45.9" / 116.8 cm	54.6" / 138.7 cm	45.9" / 116.8 cm	54.6" / 138.7 cm	
	Resolution		120Hz E-LED BLU	120Hz E-LED BLU	120Hz E-LED BLU	120Hz E-LED BLU	
	Brightness (Typ.)		1920 x 1080 (16:9)	1920 x 1080 (16:9)	1920 x 1080 (16:9)	1920 x 1080 (16:9)	
	Contrast Ratio (Typ.)		4,000 nits	4,000 nits	3,000 / 1,000 nits	3,000 / 1,000 nits	
	Viewing Angle (H / V)		5,000:1	4,000:1	5,000:1	4,000:1	
	Response Time (G-to-G)		178 / 178	178 / 178	178 / 178	178 / 178	
	Display Colors		6ms	6ms	6ms	6ms (3,000 nits), 8ms (1,000 nits)	
	Color Gamut		8 bit - 16.7M	8 bit - 16.7M	8 bit - 16.7M	8 bit - 16.7M	
	Operation Hours		72%	72%	72%	72%	
	Panel Orientation		24/7	24/7	24/7	24/7	
	Special Certification		Landscape / Portrait	Landscape / Portrait	Portrait	Portrait	
			IP5X	IP5X	IP5X	IP5X	
Connectivity	Input	RGB	DisplayPort 1.2 (1)	DisplayPort 1.2 (1)	N/A	N/A	
		Video	HDMI 2.0 (2)	HDMI 2.0 (2)	HDMI 2.0 (2)	HDMI 2.0 (2)	
		HDCP	HDCP 2.2	HDCP 2.2	HDCP 2.2	HDCP 2.2	
	Output	USB	USB 2.0 (1)	USB 2.0 (1)	USB 2.0 (2)	USB 2.0 (2)	
		RGB	HDMI 2.0	HDMI 2.0	N/A	N/A	
		Video	Yes	Yes	N/A	N/A	
External Control	Audio	Stereo Mini Jack	Stereo Mini Jack	N/A	N/A		
External Sensor		RS232C (In / Out), RJ45 (In / Out)	RS232C (In / Out), RJ45 (In / Out)	RS232C (In), RJ45 (In)	RS232C (In), RJ45 (In)		
Wi-Fi		Detachable Type (IR, Ambient)	Detachable Type (IR, Ambient)	Detachable Type (IR, Ambient (Outdoor Only))	Detachable Type (IR, Ambient (Outdoor Only))		
		Yes	Yes	Yes	Yes		
Power	Type		Internal	Internal	Internal	Internal	
	Power Supply		AC 100 - 240 V~ (+/- 10 %), 50 / 60 Hz	AC 100 - 240 V~ (+/- 10 %), 50 / 60 Hz	AC 100 - 240 V~ (+/- 10 %), 50 / 60 Hz	AC 100 - 240 V~ (+/- 10 %), 50 / 60 Hz	
	Power Consumption	Max	350 W	450 W	380 W	500 W	
		Typical	330 W	420 W	380 W	470 W	
	Sleep Mode	< 0.5 W	< 0.5 W	< 1 W	< 1 W		
	Off Mode	< 0.5 W	< 0.5 W	< 0.5 W	< 0.5 W		
Mechanical Specs	Dimensions	Set (W x H x D)	1062 x 616.6 x 54.5 mm / 41.8" x 24.28" x 2.15"	1253.4 x 724.2 x 54.5 mm / 49.35" x 28.51" x 2.15"	6191 x 11075 x 69.5 mm / 24.37" x 43.60" x 2.74"	726.8 x 1299 x 69.5 mm / 28.61" x 51.14" x 2.74"	
		Package (W x H x D)	1189 x 757 x 158 mm / 46.81" x 29.8" x 6.22"	1420 x 879 x 178 mm / 55.9" x 34.61" x 7"	796 x 1255 x 327 mm / 31.34" x 49.41" x 12.87"	940 x 1466 x 367 mm / 37.0" x 57.72" x 14.45"	
	Weight	Set	18.2 kg / 40.12 lbs	22.1 kg / 48.72 lbs	32 kg / 70.55 lbs	42 kg / 92.6 lbs	
		Package	23 kg / 50.71 lbs	28 kg / 61.73 lbs	39.5 kg / 87.08 lbs	52 kg / 114.64 lbs	
	VESA Mount (mm)		400 x 400 mm	400 x 400 mm	N/A	N/A	
Bezel Width (mm)		19.9 (even)	19.9 (even)	22.8 (even)	22.8 (even)		
Environmental Conditions	Operating Temperature		0°C~ 30°C (Direct Sunlight) 0°C~ 40°C (w/o Direct Sunlight)	0°C~ 30°C (Direct Sunlight) 0°C~ 40°C (w/o Direct Sunlight)	0°C~ 30°C (Direct Sunlight) 0°C~ 40°C (w/o Direct Sunlight)	0°C~ 30°C (Direct Sunlight) 0°C~ 40°C (w/o Direct Sunlight)	
	Operating Humidity		10~80%	10~80%	10~80%	10~80%	
	Features		IP5X Rated, Polarized Sun Glasses Viewable in Any Direction, Portrait / Landscape Installation Support, Auto Brightness Control with Ambient Brightness Sensor, Temperature Sensor, RJ45 MDC, Auto Source Switching & Recovery, Clock Battery (80 Hrs Clock Keeping), Kensington Lock, Wi-Fi Module Embedded	IP5X Rated, Polarized Sun Glasses Viewable in Any Direction, Portrait / Landscape Installation Support, Auto Brightness Control with Ambient Brightness Sensor, Temperature Sensor, RJ45 MDC, Auto Source Switching & Recovery, Clock Battery (80 Hrs Clock Keeping), Kensington Lock, Wi-Fi Module Embedded (2 Ea, One Per Each Display)	IP5X Rated, Polarized Sun Glasses Viewable in Any Direction, Portrait / Landscape Installation Support, Auto Brightness Control with Ambient Brightness Sensor, Temperature Sensor, RJ45 MDC, Auto Source Switching & Recovery, Clock Battery (80 Hrs Clock Keeping), Wi-Fi Module Embedded (2 Ea, One Per Each Display)	IP5X Rated, Polarized Sun Glasses Viewable in Any Direction, Portrait / Landscape Installation Support, Auto Brightness Control with Ambient Brightness Sensor, Temperature Sensor, RJ45 MDC, Auto Source Switching & Recovery, Clock Battery (80 Hrs Clock Keeping), Wi-Fi Module Embedded (2 Ea, One Per Each Display)	
Special	Processor		Coretex A72 1.7GHz Quad-Core CPU	Coretex A72 1.7GHz Quad-Core CPU	Coretex A72 1.7GHz Quad-Core CPU	Coretex A72 1.7GHz Quad-Core CPU	
	On-Chip Cache Memory		L1 Instruction Cache: 48KB L1 Data Cache: 32KB L2 Cache: 2MB	L1 Instruction Cache: 48KB L1 Data Cache: 32KB L2 Cache: 2MB	L1 Instruction Cache: 48KB L1 Data Cache: 32KB L2 Cache: 2MB	L1 Instruction Cache: 48KB L1 Data Cache: 32KB L2 Cache: 2MB	
	Clock Speed		1.7GHz	1.7GHz	1.7GHz	1.7GHz	
	Main Memory Interface		2.5GB LPDDR4 1.5GHz 64 bit	2.5GB LPDDR4 1.5GHz 64 bit	2.5GB LPDDR4 1.5GHz 64 bit	2.5GB LPDDR4 1.5GHz 64 bit	
	Graphics	Graphic Resolution		1920 x 1080	1920 x 1080	1920 x 1080	1920 x 1080
		Output Resolution		3840 x 2160 (Scale Up From Graphic Processing Result) - Supports OpenGL ES	3840 x 2160 (Scale Up From Graphic Processing Result) - Supports OpenGL ES	3840 x 2160 (Scale Up From Graphic Processing Result) - Supports OpenGL ES	3840 x 2160 (Scale Up From Graphic Processing Result) - Supports OpenGL ES
	Storage (FDM)	Storage (FDM)		8GB (3.88GB Occupied by O/S, 4.12GB Available)	8GB (3.88GB Occupied by O/S, 4.12GB Available)	8GB (3.88GB Occupied by O/S, 4.12GB Available)	8GB (3.88GB Occupied by O/S, 4.12GB Available)
		Video Decoder		MPEG-1/2/4, H.263, H.264/AVC, UHD H.264/AVC, VC-1, AVS+, HEVC, JPEG, PNG, VP8, VP9	MPEG-1/2/4, H.263, H.264/AVC, UHD H.264/AVC, VC-1, AVS+, HEVC, JPEG, PNG, VP8, VP9	MPEG-1/2/4, H.263, H.264/AVC, UHD H.264/AVC, VC-1, AVS+, HEVC, JPEG, PNG, VP8, VP9	MPEG-1/2/4, H.263, H.264/AVC, UHD H.264/AVC, VC-1, AVS+, HEVC, JPEG, PNG, VP8, VP9
	Multimedia	Audio Decoder		AC3 (DD), MPEG	AC3 (DD), MPEG	AC3 (DD), MPEG	AC3 (DD), MPEG
		IO Ports		USB 2.0	USB 2.0	USB 2.0	USB 2.0
Operating System		Tizen 4.0 (VDLinux)	Tizen 4.0 (VDLinux)	Tizen 4.0 (VDLinux)	Tizen 4.0 (VDLinux)		
Accessories	Included		Quick Setup Guide, Regulatory Guide, Warranty Card, Power Cord, Remote Controller, Batteries, IR, Ambient Sensor	Quick Setup Guide, Regulatory Guide, Warranty Card, Power Cord, Remote Controller, Batteries, IR, Ambient Sensor	Quick Setup Guide, Regulatory Guide, Warranty Card, Power Cord, Remote Controller, Batteries, IR, Ambient Sensor	Quick Setup Guide, Regulatory Guide, Warranty Card, Power Cord, Remote Controller, Batteries, IR, Ambient Sensor	
Certification	Safety		UL(USA): cUL60950-1	UL(USA): cUL60950-1	UL(USA): cUL60950-1	UL(USA): cUL60950-1	
	EMC		FCC (USA) Part 15, Subpart B Class A	FCC (USA) Part 15, Subpart B Class A	FCC (USA) Part 15, Subpart B Class A	FCC (USA) Part 15, Subpart B Class A	
Service	Standard Warranty		3 Years Onsite (Parts / Labor / Backlight)	3 Years Onsite (Parts / Labor / Backlight)	3 Years Onsite (Parts / Labor / Backlight)	3 Years Onsite (Parts / Labor / Backlight)	

Connectivity

- RS232C Out / In
- Audio Out
- IR In
- Ambient Sensor In
- USB
- LAN Out
- LAN In
- HDMI 1 In
- HDMI 2 In
- DP In
- HDMI Out



ProCare

Samsung ProCare Indoor Display Solutions

- Fast Track with White Glove Next Business Day¹ Service
 - Includes tech-assisted exchange of display: Technician removes original unit, installs replacement and ships non-working unit to Samsung
- Fast Track Next Business Day Exchange
 - Return shipping label provided, customer returns original unit in new unit's box
- Available on sizes 32"-85"
- 3-5 year terms available

Learn More samsung.com/business insights.samsung.com samsung.com/b2bdigitalsignage

Product Support 1-866-SAM4BIZ

Follow Us youtube.com/samsungbizusa [@SamsungBizUSA](https://twitter.com/SamsungBizUSA)

DigitalDisplayStore
Samsung Authorized Online Reseller

SAMSUNG